



P516-405

Keypad Lock

Installation Instructions
Model FE599



Important Information

You will need this code information to perform certain functions using the lock keypad. These are the factory default lock code settings (see Step 1).

Lock Programming Code

six (6) digits

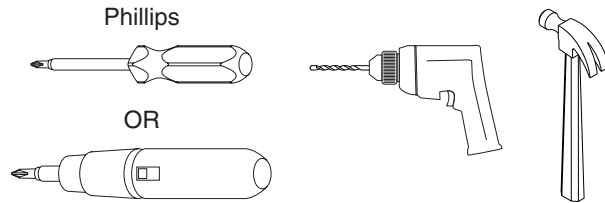
User Code A

four (4) digits

User Code B

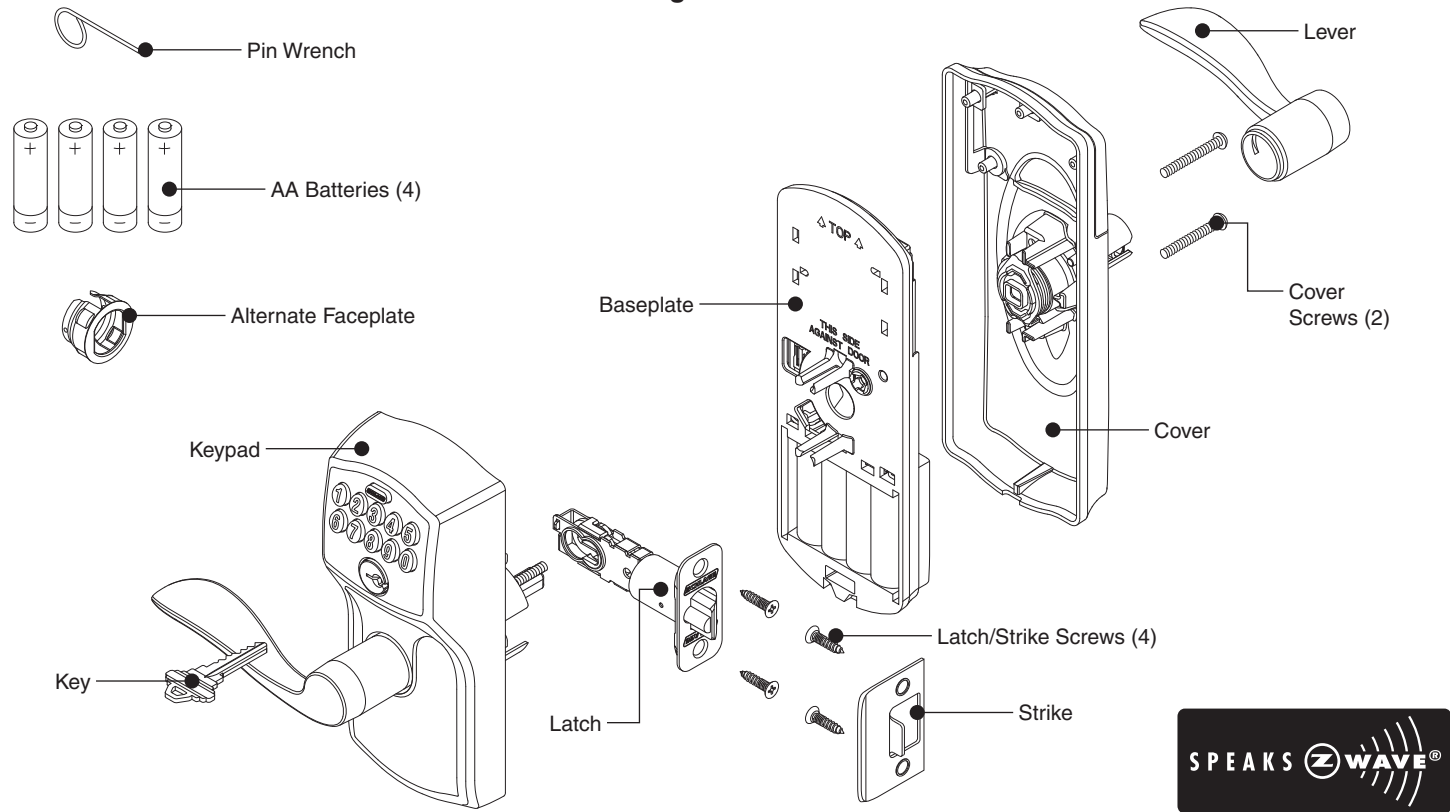
four (4) digits

Tools Needed



Web Support:
<http://monitoringcontrol.verizon.com>

Package Contents

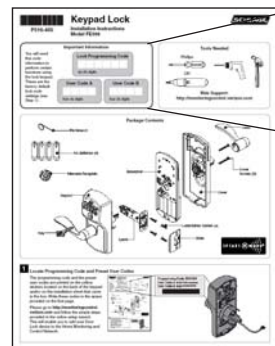


SPEAKS ZWAVE®

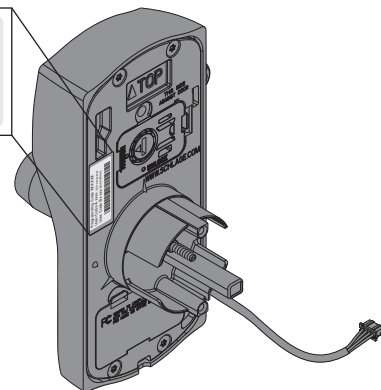
1 Locate Programming Code and Preset User Codes

The programming code and the preset user codes are printed on the yellow stickers located on the back of the keypad and/or on the installation sheet that came in the box. Write these codes in the space provided on the first page.

Please go to <http://monitoringcontrol.verizon.com> and follow the simple steps provided in the online setup wizard. This will enable you to add your Door Lock device to the Home Monitoring and Control Network.

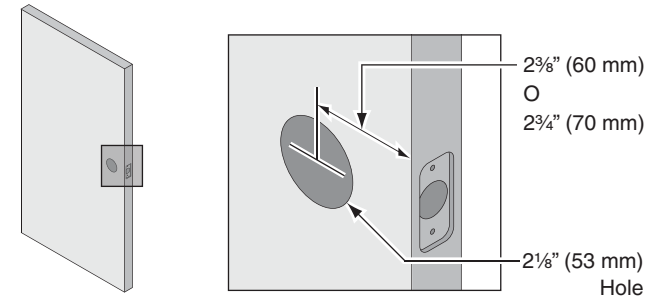


Programming Code XXXXXX
User Code A xxxx S/N x-xxxxxxx
User Code B xxxx Model FE599

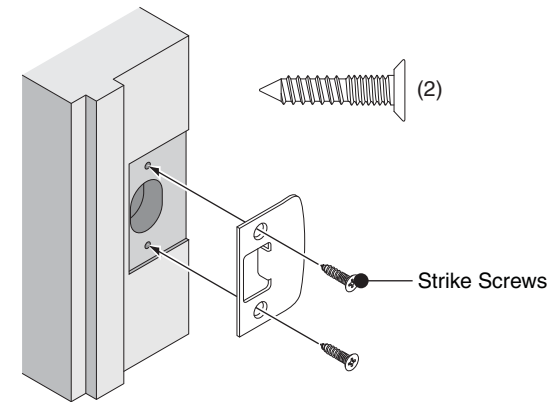


2 Check Door Dimensions

If your door does not match the dimensions shown, go to <http://verizon.schlage.com> for instructions on how to prepare your door.

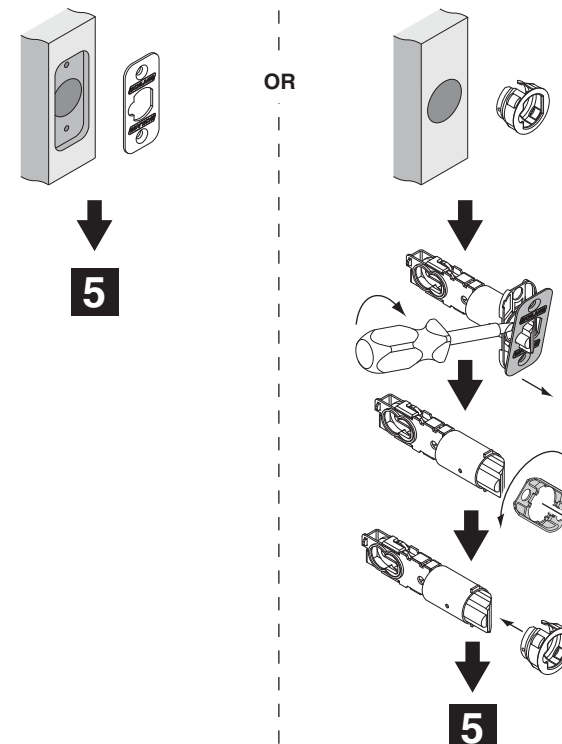


3 Install Strike Into Frame



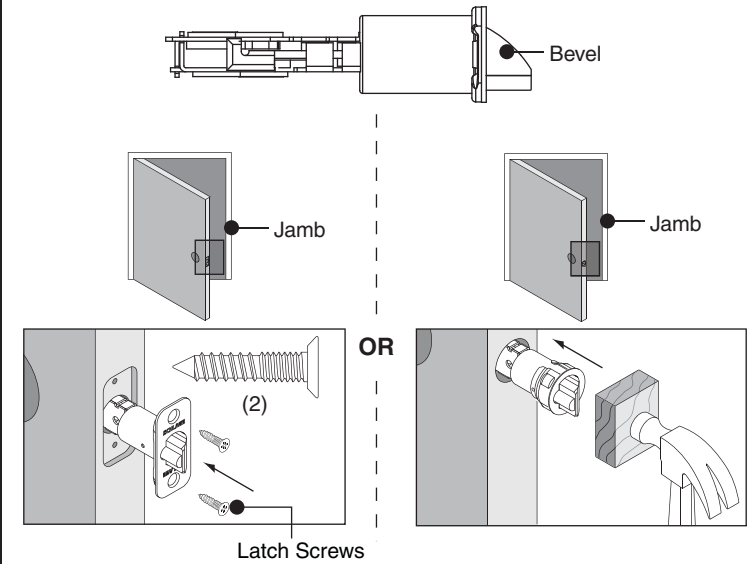
4 If Necessary, Change Latch Faceplate

Check edge of door to determine the type of faceplate required.

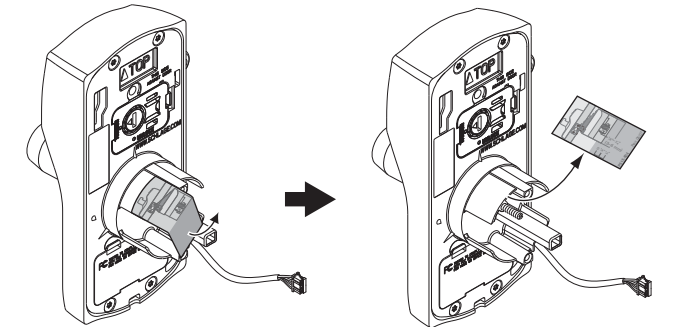


5 Install Latch

Latch must be flipped so that bevel faces toward door jamb.

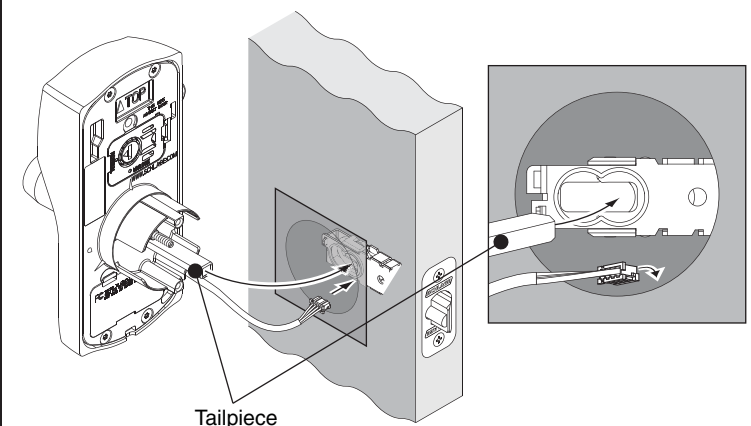


6 Remove Sticker from back of Lock



7 Install the Keypad

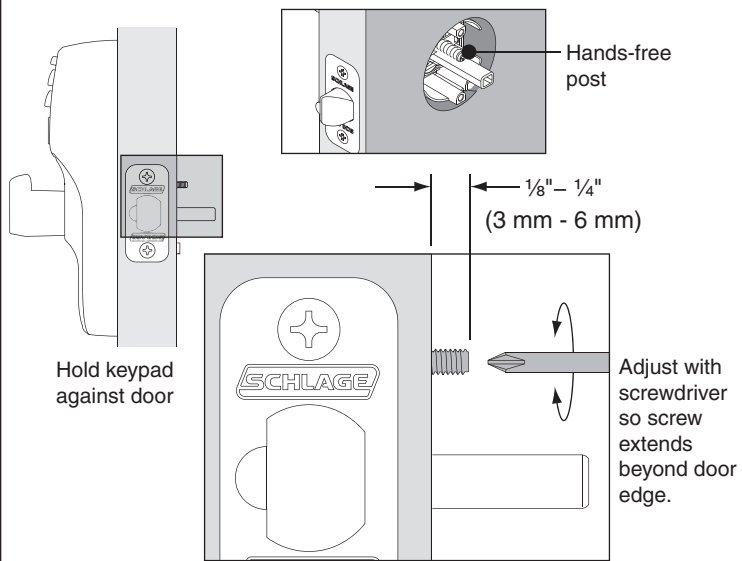
Feed the cable under latch assembly as shown below. Then slide the tailpiece through the hole as shown below.



8 Adjust Hands-free Post

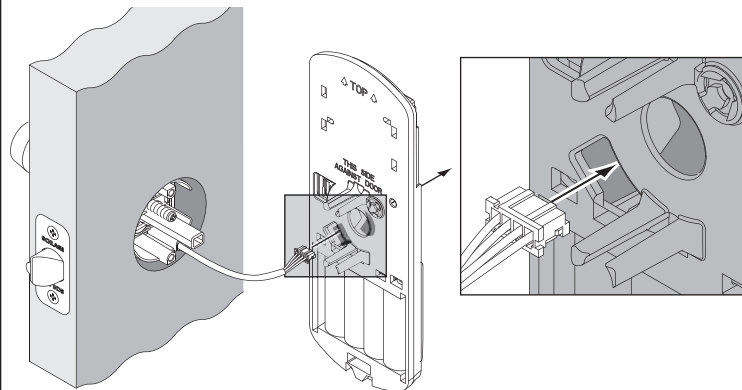
The hands-free post is the threaded stud on back of lock. It's purpose (in step 10) is to attach the lock and baseplate together so that the lock will hold itself on the door.

Hands-free post may need to be adjusted with a screwdriver to the dimensions shown below.



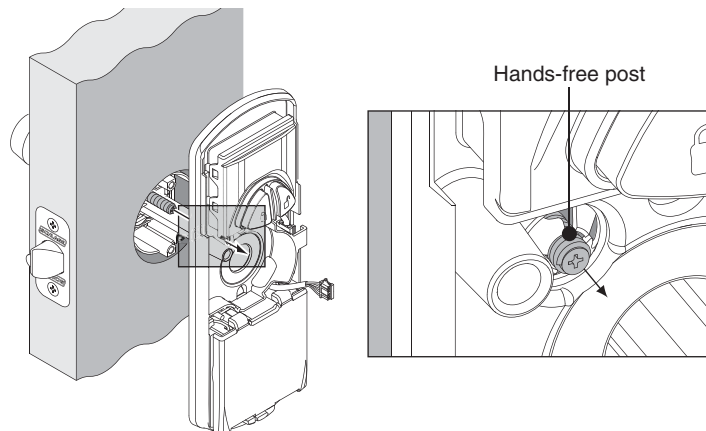
9 Feed Cable through Baseplate

Feed the cable through the hole as shown below. **DO NOT connect the cable at this point.**



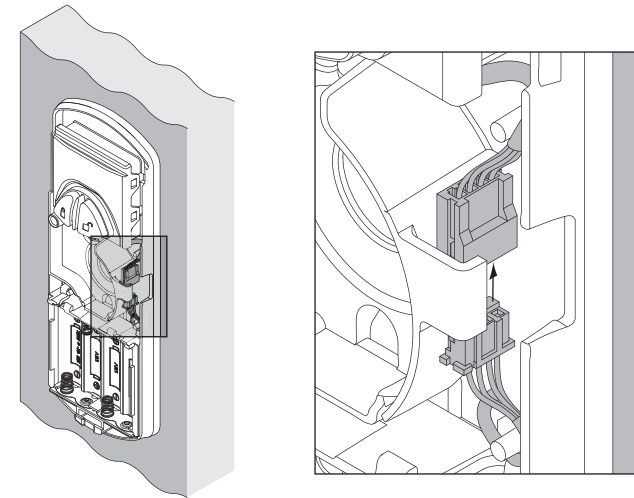
10 Slide Baseplate onto Door over Hands-free post

Hands-free post should lock plate against door surface. If hands-free post does not lock plate onto door, see step 8 for adjustment.

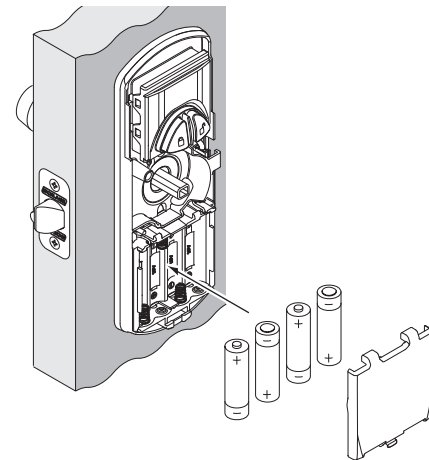


11 Connect the Cable

Snap the connectors together.

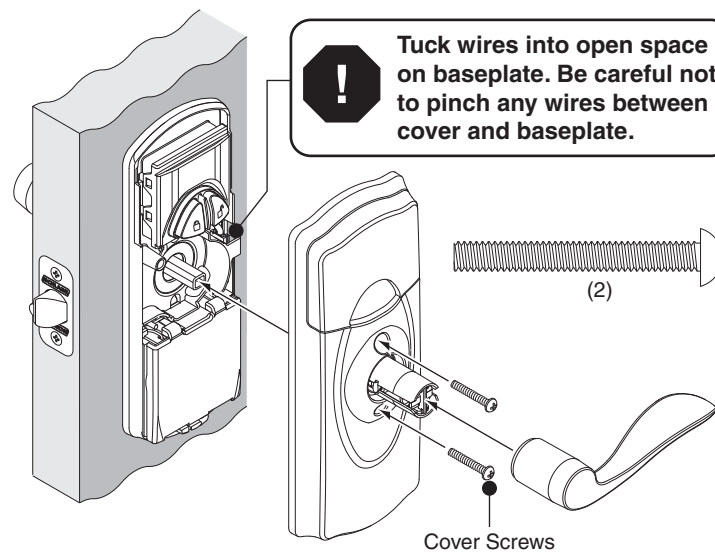


12 Install Batteries and Battery Cover

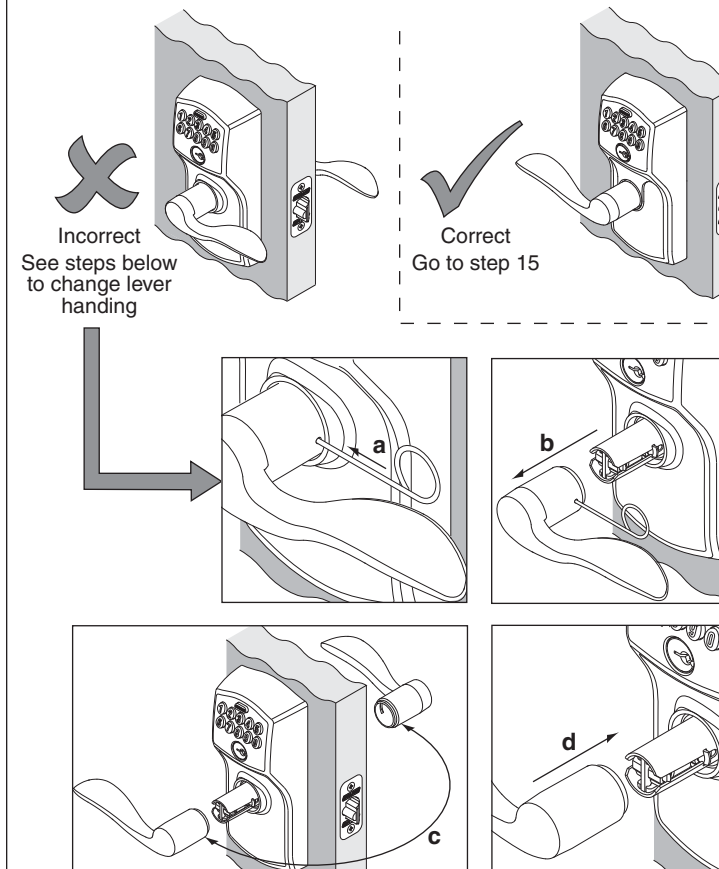


13 Install Cover and Lever

If the lever does not snap into place easily, you may have to tap the lever with a hammer using a piece of wood to cushion it. Be careful not to damage the finish of the lever. See step 14 on the next page to verify that the lever is handed correctly to match your door.



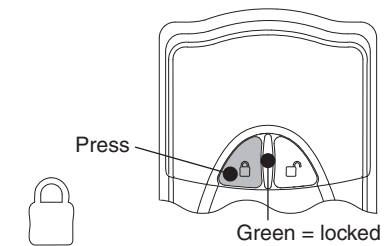
14 Check Handing of Lever



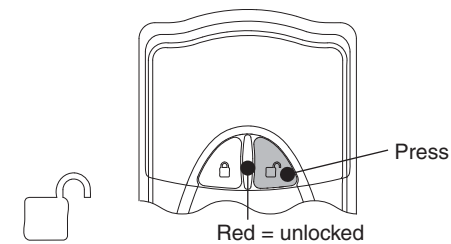
15 Test Locking and Unlocking from Inside

! Test with door open!

To lock, press button.



To unlock, press button.



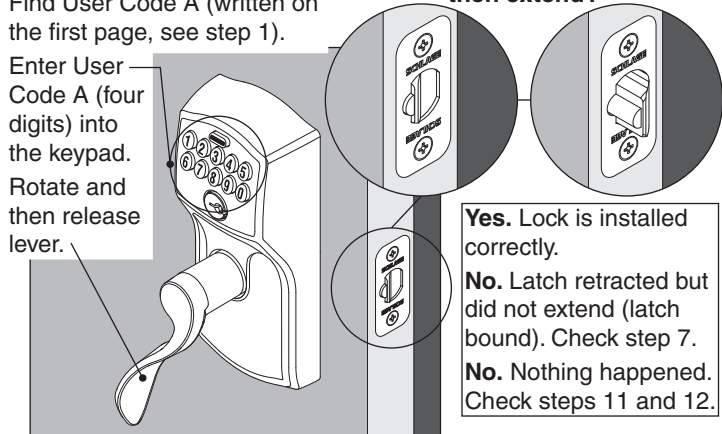
16 Test outside entry (when door is locked)

! Test with door open!

Unlock

1. Find User Code A (written on the first page, see step 1).
2. Enter User Code A (four digits) into the keypad.
3. Rotate and then release lever.

Did latch retract and then extend?

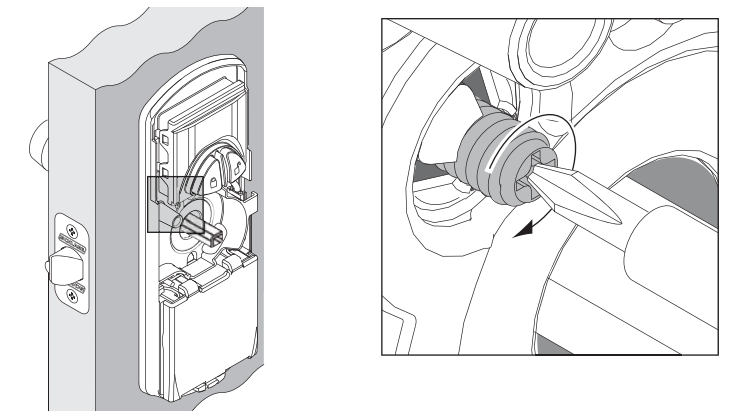


17 Configure your system

After you finish the door lock installation, please go back to the setup wizard at <http://monitoringcontrol.verizon.com> to complete the configuration process.

! If Lock Removal is Required

Hands free post must be disengaged to prevent damage to lock.



FCC Statement

This device complies with part 15 of the FCC rules. Operation is subject to the following two conditions: (1) This device may not cause harmful interference, and (2) this device must accept any interference received, including interference that may cause undesired operation.

Changes or modifications to this equipment not expressly approved by Schlage could void the user's authority to operate the equipment.

FCC ID: P2GFE599

IC: 7954A-FE599